



CAMBRIDGE
INTERNATIONAL

Results that Mesh

WIRE CLOTH

Filtration Screens and Fabrications





When it comes to making wire cloth, no one does it better than Cambridge. Our technicians conduct multiple quality checks throughout each step of the manufacturing process. Each shipment of wire is gauged for size and uniformity ... then tested for tensile strength and content. It's our way of making absolutely sure that the raw material content that goes into every Cambridge product meets our tough quality standards.

During weaving, our technicians carefully control the tension of the warp and fill wires. The regularity of openings is continually monitored and the mesh count measured for accuracy. The finished cloth is inspected over light tables to ensure exact conformity to the original spec – and to detect even the slightest flaw.

Uncommon expertise in wire cloth products.



Since 1911, the Cambridge name has represented excellence in the design and manufacture of wire cloth fabrications and filtration screens. As part of our heritage as Cambridge Wire Cloth, we've spent nearly a century building the industry's largest, most capable resource that customers across the United States and throughout the world rely on for standard and custom product solutions.

Whether your need is for the finest wire cloth weaves used in the chemical and food processing industries ... or coarser weaves for sizing, dewatering, extruding or retaining operations, Cambridge is your best source. Our capabilities extend to custom woven wire cloth products as well; if anyone can meet

your needs, we can. The same is true for our extensive line of fabricated products including filter leaves, vibrating screens, baskets, strainers, trays and many others.

Today, as we continue to achieve new standards in quality and precision, our strong dedication to craftsmanship makes us one of very few producers of high-quality, custom wire cloth and wire cloth fabrications in the U.S. – or anywhere in the world. With international needs growing every day, we're experts in handling all types of export shipments including preparing CFR, DDU or DIF quotations and processing all other documentation. Our network of international representatives provides market coverage that is both broad and deep.

The industry's largest selection of materials and weaves.

At Cambridge, we can meet literally thousands of individual specifications for woven wire cloth and wire cloth fabrications. Whether your need is for a coarse mesh with two-inch openings, or a fine weave with an opening of only five microns, we can fulfill it, in various types of weaves. In materials alone, the choices we offer are extremely wide-ranging:

- Stainless steel, including T-304, T-316 and low-carbon stainless alloys
- Copper
- Brass
- Aluminum
- Nickel
- Silver
- Carpenter 20®
- Hastelloy®
- Inconel®
- Monel®
- Other alloys (*special and standard*)
- PVC
- Polyester

Expertise and responsiveness that makes your job easier.

When you work with Cambridge, responsiveness is Job One. That extends to helping you develop the optimum



specifications for your requirements, as well as making the ordering process as smooth as possible.

We know that ordering wire cloth and wire cloth fabrications can sometimes be a complex undertaking. That's why we have sales and applications engineers ready to provide assistance in determining the best solution for your application. They have the expertise to help you compare different metals and alloys ... special mesh designs ... even nonmetallic materials like PVC and polyester ... with the goal of meeting your needs precisely.

Once your specifications are set, our large and varied inventory gives us the ability to deliver your order precisely how and when you need it. An extensive

inventory of raw materials, coupled with our flexible production schedule on the factory floor, permits prompt delivery of many special-order items as well. Our commitment to flexibility also means you can order wire cloth products in any quantity ... in bulk rolls ... in cut or pre-shaped pieces.

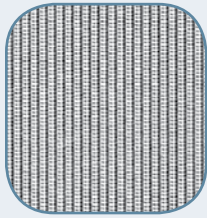
Some of the many areas where we assist customers in determining optimal product specifications:

- Understanding the intended application
- Proper mesh or size of opening
- Choice of materials
- The need for special screens or cut pieces
- Special edge requirements

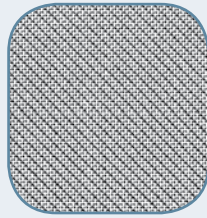


Standard Weaves & Specifications

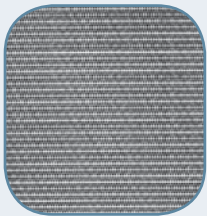
Listed below are just some of the many wire cloth weave types available from Cambridge:



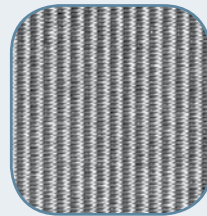
Double crimped or plain weave for general-purpose applications.



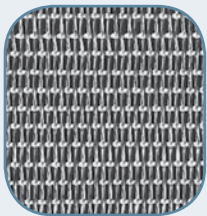
Twilled weave permitting small openings and increased strength.



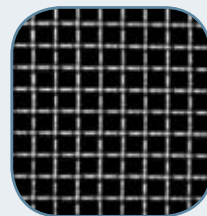
Plain Dutch weave combining great strength with very small triangular openings.



Twilled double-Dutch weave for maximum density and a highly smooth surface.



Oblong opening weave which provides less blinding or clogging compared to square mesh.



Lock crimp weave – excellent for trammels and vibrators by keeping openings accurate to give uniform product sizing.

These wire cloth examples are all available in standard market grades. Market grades are generally available in T-304 and T-316 stainless steel.

Ultrafine Cloth

The complete line of Cambridge ultrafine cloth products is engineered to meet strict requirements pertaining to retention, rigidity, corrosion resistance and/or changeability:

Micronic mesh – available with a nominal micron rating as low as 5.0, with excellent flow characteristics.

Filter cloth – with excellent mechanical and performance characteristics.

Reverse filter cloth – providing a substantially higher flow rate than other weave products.

Square mesh – widely used in a broad range of applications.

Square Mesh Wire Cloth

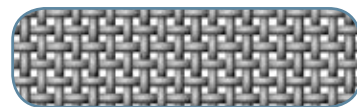
Our ready inventory of square mesh wire cloth includes a wide range of mesh sizes in all standard market grades:



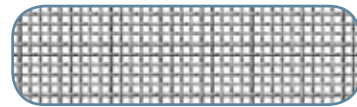
2 mesh, .063" dia. wire



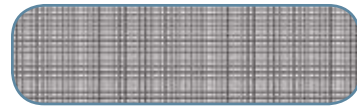
3 mesh, .120" dia. wire



9 mesh, .063" dia. wire



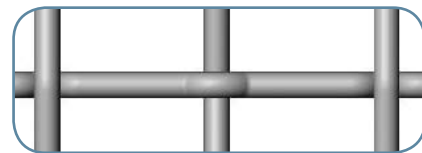
20 mesh, .016" dia. wire



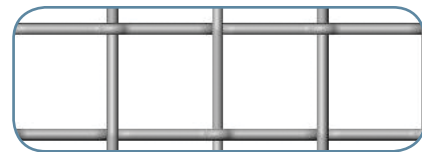
100 mesh, .0045" dia. wire

Space Cloth

Rugged space cloth products also available in a wide range of sizes and specifications, such as:



$\frac{3}{4}$ " opening, .135" dia. wire



$\frac{1}{2}$ " opening, .063" dia. wire



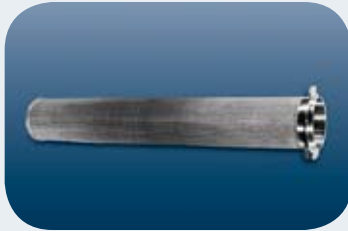
$\frac{1}{4}$ " opening, .047" dia. wire

Wire Cloth Fabrications

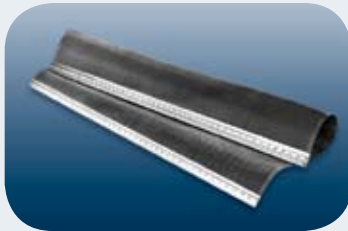
The skilled craftsmen and craftswomen at Cambridge design and manufacture standard or special wire cloth fabrications in any size, shape or quantity. Our fabrications, used all over the world, include screens, baskets, strainers, trays, and specials of all kinds.



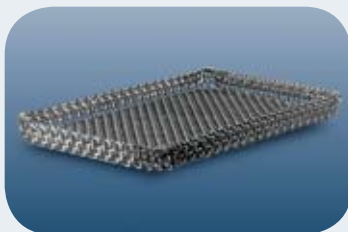
Strainers made of corrosion-resistant alloy.



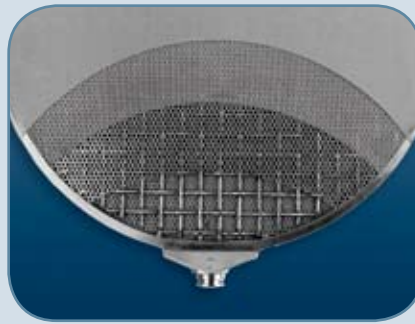
Stainless steel line strainers.



Stainless steel screen cloth with hooks for vibrating screens.



Our special heat-treated uni-tray design eliminates the need for welds, clips and other fasteners.



Filter Leaves

We're also one of the world's leading manufacturers of filter leaves. Our proprietary, super-durable ContinuWeld® construction prevents leaf warping and leaking, and maximizes service life. The continuous welding of the filter cloth to the solid bar or offset framing helps deliver drum-tight performance, with no pockets harboring bacterial or contaminate buildup. Calendered cloth is used on the inner layers to prevent dimpling of the filter surface which is caused when pressure is applied to filters made with non-calendered cloth. This smooth surface allows for even distribution of diatomaceous earth, providing maximum filtration. The ContinuWeld® design also allows for economical "like-new" reconditioning rather than having to discard worn or damaged filter leaves.



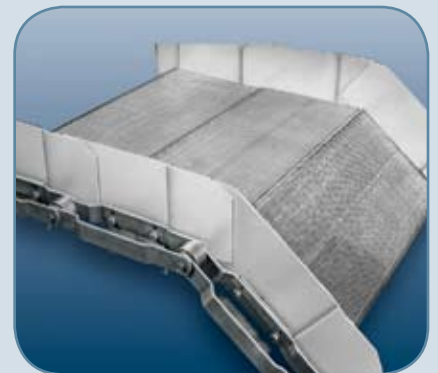
Vibrating Screens

Our vibrating screens are used in industry segments such as food processing, chemical, paper, coal, clay, and mining. Applications include washing, dewatering, sizing, and more.



Traveling Water Screens

Woven out of stainless steel, galvanized copper and PVC to resist corrosion, our traveling water screens retain excellent performance characteristics over their super-long, super-strong service life.



Panel Belting

Cambridge panel belts are used for processing gelatin and other food products, textiles, chemicals and tobacco products. They're particularly well-suited for handling light or fine materials in industrial driers and washers.



The fabrication skills of Cambridge people are unsurpassed anywhere.



CAMBRIDGE
INTERNATIONAL

Results that Mesh

Global Headquarters

105 Goodwill Road – P.O. Box 399
Cambridge, MD 21613 USA

Toll-Free Tel: 1.877.815.3717
Tel: 1.410.901.2660

Toll-Free Fax: 1.800.884.2723
Fax: 1.410.901.2680

www.cambridge-intl.com

Cambridge International companies:

Alloy Wire Belt Company

Cambridge, Inc.

Cambridge do Brasil

Cambridge Internacional S.A. de C.V.

Cambridge Wire Cloth Company

Maryland Wire Belts, Inc.